

fischer termoz SV II ecotwist

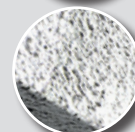
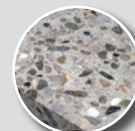
The innovative countersinkable ETICS fixing for all building material classes.



Pierre Verschuere

Harelbeke +32(0)56 71 21 45 info@pverschuere.be www.pverschuere.be

afwerkingsmaterialen, isolatie & bouwspecialiteiten
parachèvement, isolation et spécialités de la construction

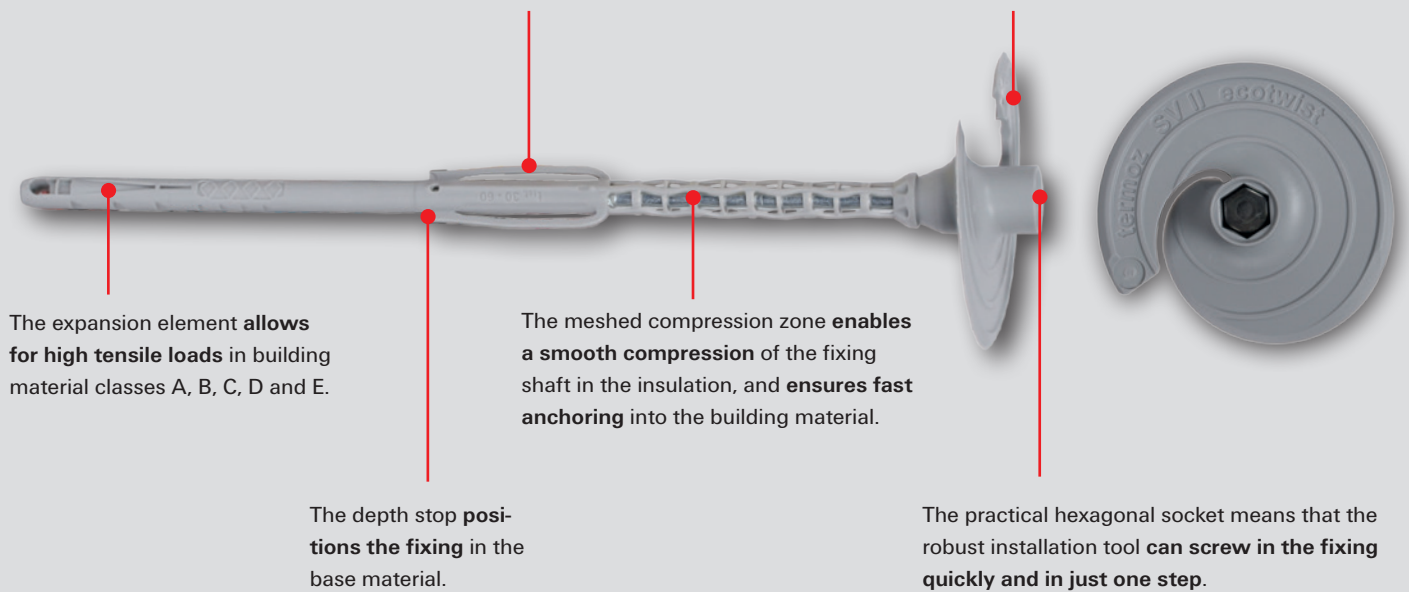


fischer 
innovative solutions

We are turning towards your success: With the fixing for all insulation thicknesses.

The anti-rotation lock **guarantees the perfect positioning** of the fixing shaft as it penetrates the insulating board.

The tapered screw-mounted support plate cuts perfectly into the insulating board to **ensure no damage is caused** to the insulation surface.



The expansion element **allows for high tensile loads** in building material classes A, B, C, D and E.

The meshed compression zone **enables a smooth compression** of the fixing shaft in the insulation, and **ensures fast anchoring** into the building material.

The depth stop **positions the fixing** in the base material.

The practical hexagonal socket means that the robust installation tool **can screw in the fixing quickly and in just one step.**

Building materials



- Approved for:
Concrete, solid brick, solid sand-lime brick, solid block made from lightweight or normal weight concrete, vertically perforated brick, perforated sand-lime brick, lightweight aerated concrete, aerated concrete, hollow block made from lightweight concrete
- Also suitable for:
Natural stone with dense structure

Test mark

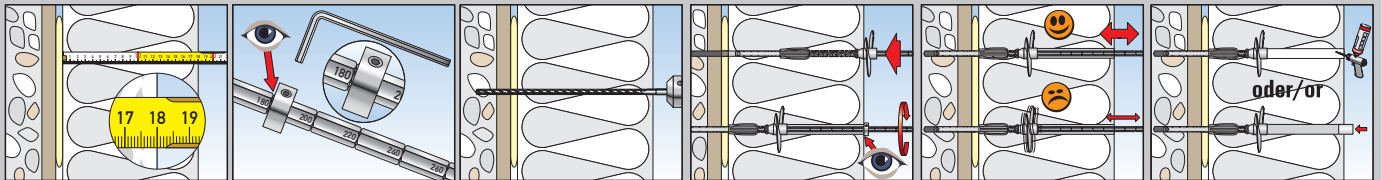


Benefits/ Advantages

- One fixing for all insulating material thicknesses from 100 mm to 400 mm. This increases productivity, saves time and storage space.
- Suitable for polystyrene and homogeneous mineral wool insulating boards.
- With the lowest chi value on the market (from 150 mm insulation thickness).
- Optimum screw geometry for fast and clean cutting into the insulation.
- The deep countersink helps to avoid fixing marks.
- With ETA approval for all building material classes A, B, C, D, E.
- Very simple drill hole depth calculation.
- Expansion part with optimised expansion zone of 35 mm requires just one drill hole depth in all conventional building materials.
- The robust installation tool is easy to use and ensures quick progress.
- Setting check through simple pressing test with the setting tool.
- Installation opening can be sealed with PU foam or a plug.

Easy to assemble: Quick, easy and securely anchored.

Installation



Product preparation

- Set the insulation thickness on the installation tool.
- After drilling, place the ETICS fastener in the drill hole.
- Place the installation tool in the appropriate hexagonal socket.



Screwing into the insulation

- The termoz SV II ecotwist's screw-mounted support plate cuts into the insulating board without damaging it.
- The anti-rotation lock keeps the fastener in the correct position during screwing into the insulating board.



Screwing in the steel screw

- When the depth stop reaches the solid base material, the screw is rotated in the expansion zone and compressed in the meshed compression zone.
- The identical thread lead on the steel screw and the screw-mounted support plate guarantees an even drive.



Anchoring into the building material

- Screwing in the screw causes the fixing sleeve to expand, in turn anchoring the termoz SV II ecotwist into the building material.
- During the installation process, the compression zone is compressed to a minimum.
- The fixing is fully installed when the marking ring / stop disc on the installation tool is flush with the surface of the insulation.
- After the pressure test, the installation tool can be removed and the drill hole sealed using PU foam or the PS sealing element.



fischer termoz SV II ecotwist installation tool

- Available in 260 mm and 400 mm sizes.
- Insulation thickness can be easily set on the setting tool.
- Suitable for universal use: Can be set to the respective insulation thickness.
- Contains stop disc to support the visual setting depth marking.



Loads

Load table						
Base material	Cat.	Gross density class ρ [kg/dm ³]	Minimum compressive strength f_b [N/mm ²]	Remarks	Drilling process ²⁾	Characteristic tensile load capacity N^{Rk} [kN]
Thin concrete slabs (e.g. weather facing) Concrete \geq C20/25				Thickness of the thin slabs 100 mm < h \leq 40 mm	H	0.9
Thin concrete slabs (e.g. weather facing) Concrete \geq C20/25				Thickness of the thin slabs 100 mm < h \leq 40 mm	D	1.5
Concrete C12/15 – C50/60 EN 206-1	A	-	-	-	H	1.5
Solid sand-lime brick, KS DIN V 106 / EN 771-2	B	≥ 2.0	20	Cross-section reduced by up to 15% by the holes vertical to the bearing surface	H	1.5
			12			1.2
Masonry brick, MZ DIN 105-100 / EN 771-1	B	≥ 1.8	12	Cross-section reduced by up to 15% by the holes vertical to the bearing surface	H	1.2
Solid blocks made from normal weight concrete, Vbn DIN 18153-100 / EN 771-3	B	≥ 2.0	20	Cross-section reduced by up to 10% by the holes vertical to the bearing surface	H	1.5
			12			1.2
Solid blocks made from light- weight concrete, Vbn DIN 18152-100 / EN 771-3	B	≥ 1.4	8	See approval	H	0.6
Perforated sand-lime brick, KSL DIN V 106-100 / EN 771-2	C	≥ 1.4	20	Cross-section reduced by more than 15% by the holes vertical to the bearing surface, outer wall thickness \geq 23 mm	H	1.2
			12			0.75
Vertically perforated brick, HLz DIN 105-100 / EN 771-1	C	≥ 1.0	12	Cross-section reduced by more than 15% and less than 50% by the holes vertical to the bear- ing surface, outer wall thickness \geq 12 mm	D	0.75
Hollow blocks made from light- weight concrete, Hbl DIN V 18151 / EN 771-3	C	≥ 1.2	10	See approval	H	1.2
			8			0.9
			6			0.75
			4			0.6
French parpaing stone (breeze block) EN 771-3 / NF P 14301	C	≥ 0.9	4		H	0.5
Porous lightweight concrete LAC DIN EN 1520	D	≥ 0.9	6	-	H	0.75
Aircrete PP DIN V 4165-100 / EN 771-4	E	≥ 0.5	4	-	D	0.4
Partial safety factor ¹⁾						2.0

¹⁾ In the absence of other national regulations

²⁾ H = hammer drilling / D = rotary drilling

Our all-round service for you.



We are a reliable partner, one that will stand by your side and address your individual requirements with advice and action:

- Our products range from chemical systems and steel anchors to plastic anchors.
- Competence and innovation through own research and development.
- Global presence and active sales service in more than 100 countries.
- Qualified application-specific advice for economic installation solutions that are compliant with directives. If need be we are there for you – even at the construction site.
- Training measures (some with certification) at your premises or at the fischer ACADEMY.
- Construction and design software for challenging fixings.

This is what fischer stands for.



FIXING SYSTEMS

AUTOMOTIVE SYSTEMS

FISCHERTECHNIK

CONSULTING



Pierre Verschuere

Harelbeke +32(0)56 71 21 45 info@pverschuere.be www.pverschuere.be

afwerkingsmaterialen, isolatie & bouwspecialiteiten
parachèvement, isolation et spécialités de la construction